



&
EVEREST

DIRECT VENT GAS FIREPLACE

HEAT & GLO®



REACH NEW
HEIGHTS



EVEREST

Invigorate a space with a twist on tradition. The Everest's upright design elevates your fire. Reach new heights of fireside appeal.

FIRE FROM WITHIN

It's a stunning fire. But take a closer look. An innovative burner design produces flames from within the logs. Creating depth and adding intensity.

UPRIGHT STYLE. DOWNRIGHT PERFORMANCE.

Showcase the style and feel the heat. The shallow footprint of the Everest radiates more warmth out into the room. Quickly and effectively.



ATLAS SURROUND

Add European influence to your contemporary fire. The seamless, one-piece construction of the convex Atlas surround commands attention. A beveled glass shelf with brushed aluminum legs adds function and completes the look.



GREIGE CONCRETE



GRAY CONCRETE

SURROUND FINISHES

Cover: *EVEREST*
 Page Two Top: *EVEREST* shown with atlas surround in greige concrete
 Page Two Bottom: *EVEREST* shown standard
 Page Three: *EVEREST* shown standard

EVEREST TECHNOLOGIES

INTELLIFIRE™ IGNITION SYSTEM



The IntelliFire™ Ignition System (IPI) is an advanced intermittent pilot ignition system. IPI constantly monitors ignition, ensures safe functioning and conserves up to \$10/month in energy costs.

DIRECT VENT TECHNOLOGY



Direct Vent fireplaces remove 100% of combustion exhaust and odors outside of the home. These sealed fireplaces provide optimal heat, conserve energy and ensure clean, safe indoor air quality.

HEAT ZONE TECHNOLOGY

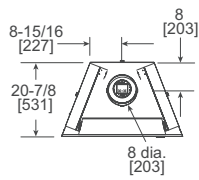


Draw heat from the fireplace into another room of the home, up to 20 feet away. When a heat zone kit is run continuously, it will redirect up to 25% of the fireplace's heat to another area, thus reducing wall temperatures above the fireplace. Two heat zones run continuously will redirect up to 50% of the fireplace's heat.

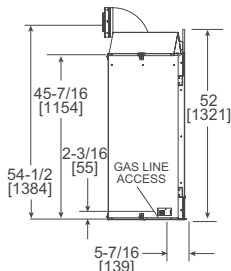
EVEREST SPECIFICATIONS

MODEL	FRONT WIDTH		BACK WIDTH		HEIGHT		DEPTH		GLASS SIZE 24-3/4 x 31-1/2 [629 x 800]	BTU/HOUR INPUT 23,000-33,000 (NG)
	Unit	Framing	Unit	Framing	Unit	Framing	Unit	Framing		
EVEREST	34-1/8 [867]	35-1/8 [892]	17-7/8 [454]	35-1/8 [892]	52 [1321]	51-1/2 [1308]	20-7/8 [531]	21-3/8 [543]		

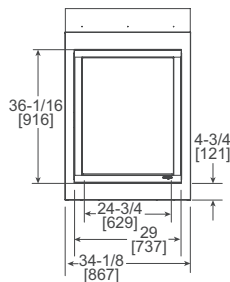
TOP VIEW



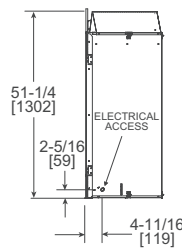
LEFT SIDE VIEW



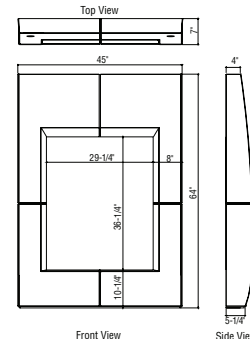
FRONT VIEW



RIGHT SIDE VIEW



SURROUND



Dimensions in diagrams are in inches and millimeters. Dimensions in table are in inches. Product information is not complete and is subject to change without notice. Product installation must adhere strictly to instructions shipped with product. We recommend measuring individual units at installation. Assumes the use of 1/2" sheetrock. NOTE: Combustible material should not cover the face. Make sure you do NOT cover the decorative door opening. Refer to installation manual for detailed specifications on installing this product. Heat & Glo reserves the right to update units periodically. The flame and ember appearance may vary based on the type of fuel burned and the venting configuration used. Actual product appearance, including flame, may differ from product images.

U.S. EFFICIENCIES

Steady State - Since most homeowners use their fireplaces for an extended time while they are in the room, Steady State measures how efficiently your fireplace converts fuel to heat once it is warmed up and running in a "steady state".

AFUE - AFUE rating is more typically used with appliances, like your furnace, that continually cycle on and off to maintain a constant temperature.

RATING	EVEREST
STEADY STATE	71.5%
AFUE	43.6% (NG)

CANADA EFFICIENCIES

EnerGuide (CSA P.4.1-02) - EnerGuide is a rating used in Canada to measure annual fireplace efficiency.

RATING	EVEREST
ENERGUIDE (CSA P.4.1-02)	46.3% (NG)

For complete information on this model, please contact us at:



No one builds a better fire

Web: heatnglo.com
 Phone: (888) 427-3973 (952) 985-6000
 E-mail: info@heatnglo.com

- facebook.com/HeatandGlo
- twitter.com/HeatandGlo
- youtube.com/HeatandGlo

HNG-1136U-0216

LIMITED LIFETIME WARRANTY*

The strongest in the industry, Heat & Glo® provides a limited lifetime warranty on the most important aspects: firebox and heat exchanger.

*For full warranty details, go to www.heatnglo.com. Fireplace glass and other surfaces get extremely HOT and can cause severe burns if touched. Do not remove the protective safety screen from the front of the glass. Keep a safe distance away. To learn more visit www.heatnglo.com/fireplacesafety

